



We make materials flow and keep projects roll

Intralogistics solutions and waste management systems

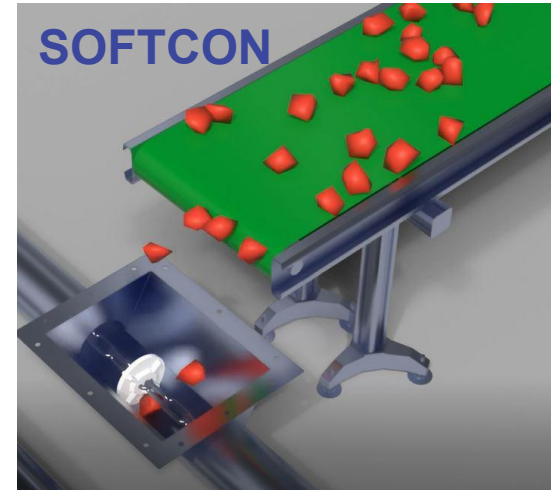
Engineering and management services

Intralogistics solutions and waste management systems



HIVACON

Hygienic Vacuum Conveying



SOFTCON

Gentle Tube Drag Conveying



AWCS

Automated Waste Collection System

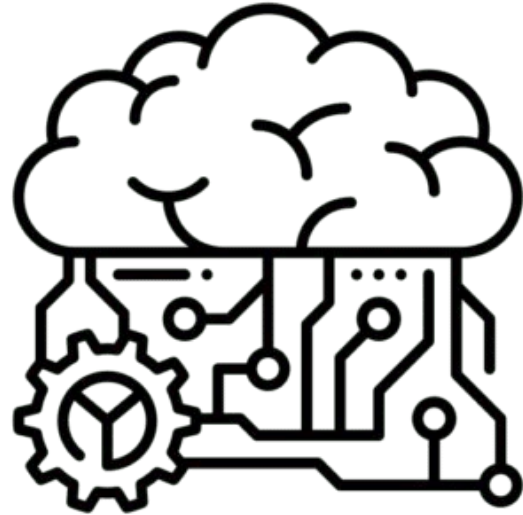


WWT

Waste Water Treatment

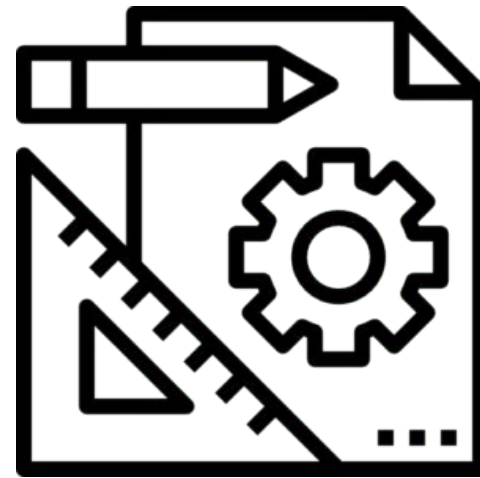
We provide integrated intralogistics and waste management turn-key solutions, including **HIVACON** Hygienic Vacuum Conveying, **SOFTCON** the gentle tube drag conveying, **AWCS** automated waste collection systems, and **WWT** wastewater treatment – all tailored to meet our customers' specific needs.

In addition to supplying turnkey solution and systems, we also provide engineering and management services



AUTOMATION ENGINEERING

Software-, process-, and electrical design



MECHANICAL ENGINEERING

Layout- and piping design



EPS MANAGEMENT

Engineering, Procurement and Supply/Supervision

We have developed strong expertise in system deliveries, enabling us to offer a wide range of design and management services. We turn ideas into products, create detailed plans, and can take full responsibility of the entire process or production lines development and implementation.

In cooperation

Atria[®]
PERHETILOILTA VUODESTA 1903



HKFOODS

Apetit

Salico
A MEMBER OF GREENFOOD



Perutnina Ptuj



NAAPURIN MAALAISKANA



BAADER ///



F.R.A. **JÆREN**



HSY

Selected cases

Participation in the design and delivery of the following projects

Atria Oyj (poultry by-products)

Naapurin Maalaiskanta Oy (poultry by-products)

Kalaneuvos Oy (fish biowaste)

Almarai Saudi- Arabia (poultry by-products)

HKscan (poultry by-products)

Greenfood group / Salico Oy (bio waste)

Apetit Oyj (vegetable by-products)

Perutnina Ptuj, Pipo (poultry by-products)

Snellmanin Lihanjalostus Oy (red meat by-products)

Vesteråse elderly house (municipality waste)

Vällingby parkstad residential area (commercial and municipality waste)

Mecca Saudi- Arabia (municipality waste)

Kruunuvuori residential area (municipality waste)

Tapiola, mall & residential area (commercial and municipality waste)

Kivistö residential area (municipality waste)

Vuores residential area (municipality waste)

Malmi hospital (municipality waste)

Odense residential (municipality waste)

HIVACON

Hygienic Vacuum Conveying for by-products

Hygienic Vacuum Conveying System is designed for the food industry, allowing high-speed transport of edible by-products, poultry, fish, meat, vegetables, fruits, and waste. Materials move through pipelines powered by airflow. The system includes our own reliable Clean-in-Place (CIP) solution, enabling effortless maintenance and cleaning.

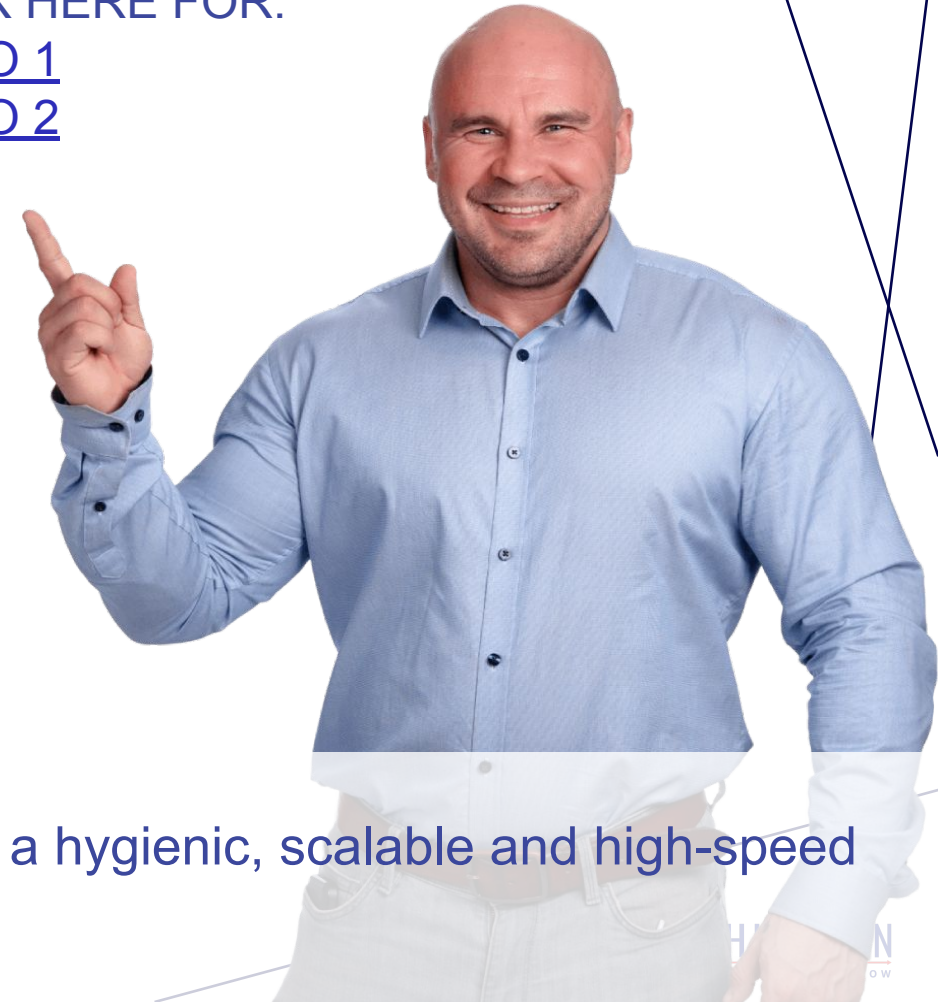


Intralogistics solutions HIVACON

CLICK HERE FOR:

[VIDEO 1](#)

[VIDEO 2](#)

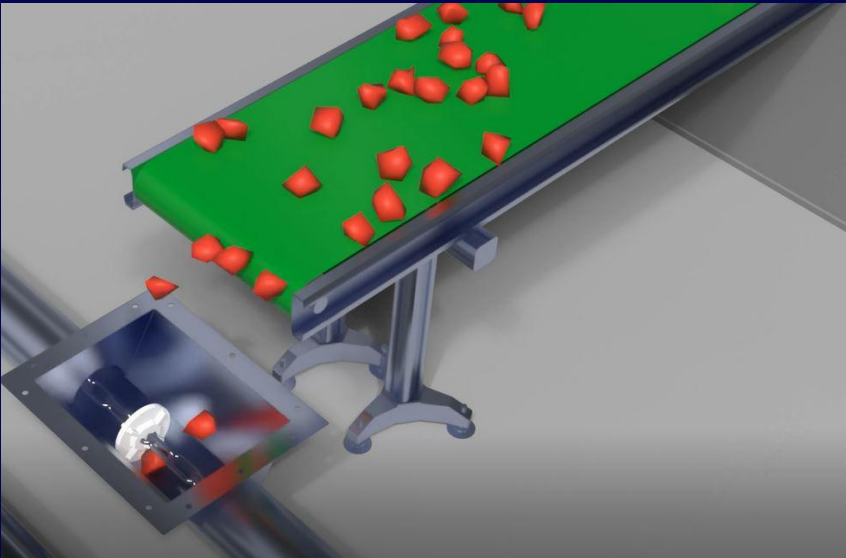


Hivacon is a hygienic, scalable and high-speed solution.

SOFTCON

Gentle Tube Drag Conveyor of delicate materials

SoftCon gentle tubular drag conveying ensures smooth material flow by handling delicate edible raw materials with care, without compromising quality. The material moves through the enclosed piping, driven by the force of the chain and pull plates. The system also features our own reliable Clean-in-Place (CIP) solution, enabling effortless maintenance and cleaning.



Intralogistics solutions **SOFTCON**

CLICK HERE FOR:
[ANIMATION](#)



SoftCon is a gentle, hygienic and energy-efficient solution.

AUTOMATED WASTE COLLECTION SYSTEM

Waste management system for solid waste

AWCS system transports waste through pipelines driven by the force of air flow. It can be used in residential areas, hospitals, nursing homes, kitchens, airports, and schools. It improves cleanliness and recycling, reduces the need for garbage trucks, and enhances waste management efficiency in these environments.



Waste Management Systems

AWCS

AWCS is truck-free waste recycling and management system.



AWCS is focused on effortless of waste management.

Hivacon Systems Oy

www.hivacon.fi

ADD YOUR INFO HERE